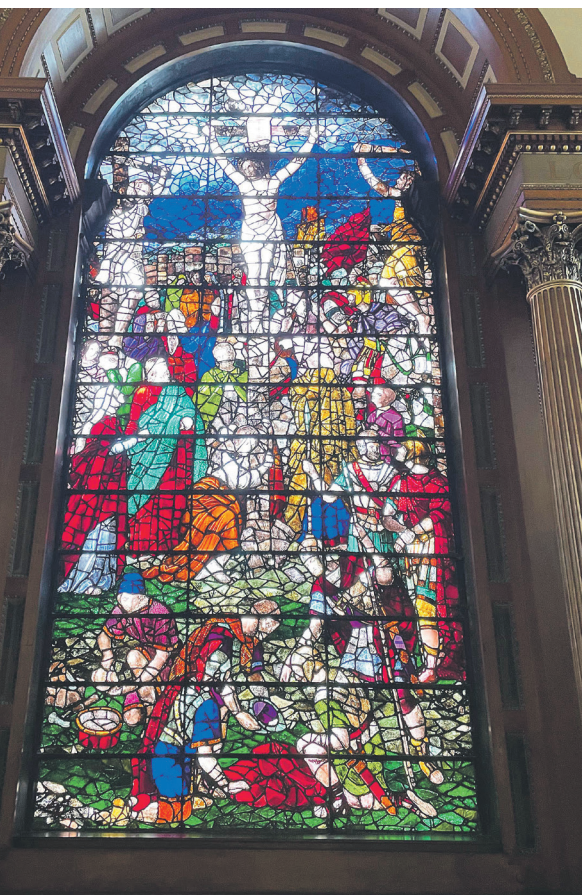




The grand exterior of St Anne's Limehouse was designed by Nicholas Hawksmoor, who also worked with the likes of Christopher Wren and John Vanbrugh

# open

for everyone



The stained glass window in the church's east wall will soon be taken away for a year of restoration and cleaning

"We want to create something called the Remembrance Garden to commemorate the waves of migrants who have come through Limehouse over the years," said Philip. "From the Huguenots, the Jews, the Chinese, all the way through to the Bangladeshi community, we want to have different parts of the churchyard planted to reflect the people who have settled here so there's something that's relevant to all of them."

"We're working with a great charity called Groundwork, who are specialists in this kind of thing, as well as with pupils at Cyril Jackson to create this."

"The churchyard is lovely – dog-walkers love it – and it's one of the biggest green spaces in the area, but it is under-utilised and we want people to come here and enjoy it."

CfSA is now embarking on a fundraising campaign to raise a further £3.5million in addition to the £3.5million anticipated from the Lottery.

This latest drive comes off the back of another successful project, that will see the church's massive stained glass window removed, restored and put back in place.

During the 12 months or so

that it's absent from the massive arch in the church's east wall, a replacement window by artist Brian Clarke will occupy the space before it finds a new home, hopefully in the East End.

Then, following more than £100,000 worth of work, the original window will return to pride of place, its panels cleaned and the extensive buckling of the metal frames rectified.

"Inside, the church requires quite a lot of cosmetic attention, which has to happen to tackle the legacy of water getting in and things like that," said Philip.

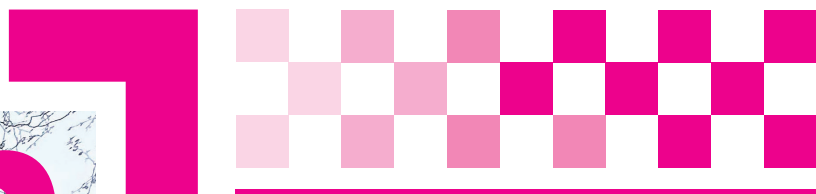
"But when the window returns, it will be another wonderful asset to the building opposite the fully restored organ that plays beautifully."

Anyone interested in getting involved with the project in a fundraising or volunteering capacity can find out more online via the charity's website.

Go to [careforstannes.org](http://careforstannes.org) for more information



Scan this code to find out more about the campaign



## what's on

things to do, places to go, people to see

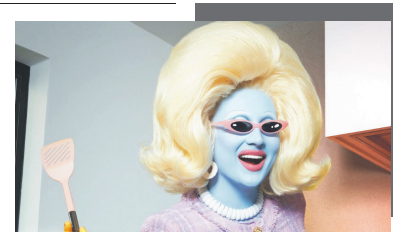


**Where?**  
Half Moon Theatre  
Limehouse

### KIDS | Pinocchio

Hear the tale of the puppet who wanted to be a real boy as Geppetto carves the titular character live on stage in this semi-improvised show. Suitable for 4+.  
Jun 8-10, various times, £7, [halfmoon.org.uk](http://halfmoon.org.uk)

**Where?**  
Troxy  
Limehouse



### STAGE | Juno Birch

The alien drag queen stars in her own theatrical one-entity show, packed with slapstick, song, dance and delusional self love. Expect lots of lobsters.  
Jun 8, 7pm, from £31.75, [troxy.co.uk](http://troxy.co.uk)



**Where?**  
Wilton's Music Hall  
Wapping

### STAGE | The Mikado

Sasha Regan presents an all-male version of the Gilbert and Sullivan classic – expect a more masculine take on *Three Little Maids From School Are We*.  
Jun 7-Jul 1, times vary, from £12.50, [wiltons.org.uk](http://wiltons.org.uk)

## flash back



This is Uli Shiefelbein, founder and head brewer at the Krafty Braumeister. You can find his excellent selection of beers on sale every Saturday at Wapping Docklands Market, from 10am-4pm come rain or shine  
[kraftybraumeister.co.uk](http://kraftybraumeister.co.uk)



Scan this to read our piece on Uli and find out how he went from homebrew in Iraq to 'retirement' in Suffolk

want more? @wharfwhispers @ f